

# GUARDIAN

Smart dismounted positioning solution  
for Defense and Security



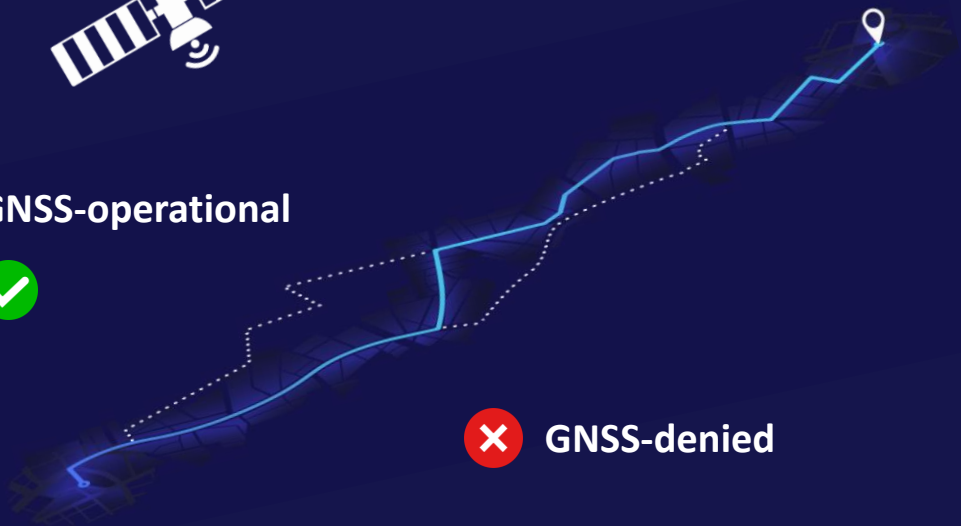
*What if GNSS positioning is no longer reliable?*

## HYPER LOCATION

Positioning technology developed for continuous tracking in the most demanding environments



GNSS-operational



✗ GNSS-denied



### Operating in GNSS-Denied Environments

Defense operations often occur in areas where GPS signals are weak or non-existent, such as underground facilities, dense urban settings, or heavily forested areas.



**Hyper Location's ability** to provide accurate positioning in these GNSS-denied environments is invaluable for mission success.



### Resilience Against GNSS Jamming and Spoofing

GNSS jamming and spoofing are well-known threats impacting operations.



**Hyper Location's ability** to detect and adjust to these threats ensures increased situational awareness and reliable blue-force tracking, which are critical for operational security and effectiveness.



# HYPER LOCATION

Inertial AI and Signal Fusion Engine that handles GNSS and GNSS-denied positioning for the ultimate precision, reliability, and adaptability in location tracking.

## Combination of Multiple Positioning Technologies

By integrating GNSS, BLE, Wi-Fi, and inertial data, Hyper Location ensures more reliable and precise positioning. This multimodal approach is particularly beneficial in complex and rapidly changing defense environments.

## Customizable to Specific Operational Needs

The AI engine can be tailored to specific defense scenarios, like navigating through challenging terrains or specific movement patterns of military personnel, ensuring the system meets the unique demands of defense operations.

## Inertial AI Engine for Non-Signal Areas

In situations where GNSS, BLE, or Wi-Fi is unavailable, the AI-powered inertial engine can still locate personnel using the device's built-in sensors. This feature is crucial for continuous tracking of defense personnel during missions in enclosed or remote areas.

## Device-to-Device Positioning for Enhanced Accuracy

The mesh network capability, where devices scan for nearby units to improve accuracy, is particularly useful in group operations. It enhances situational awareness and coordination among defense teams.

## Compatibility with Standard Military Equipment

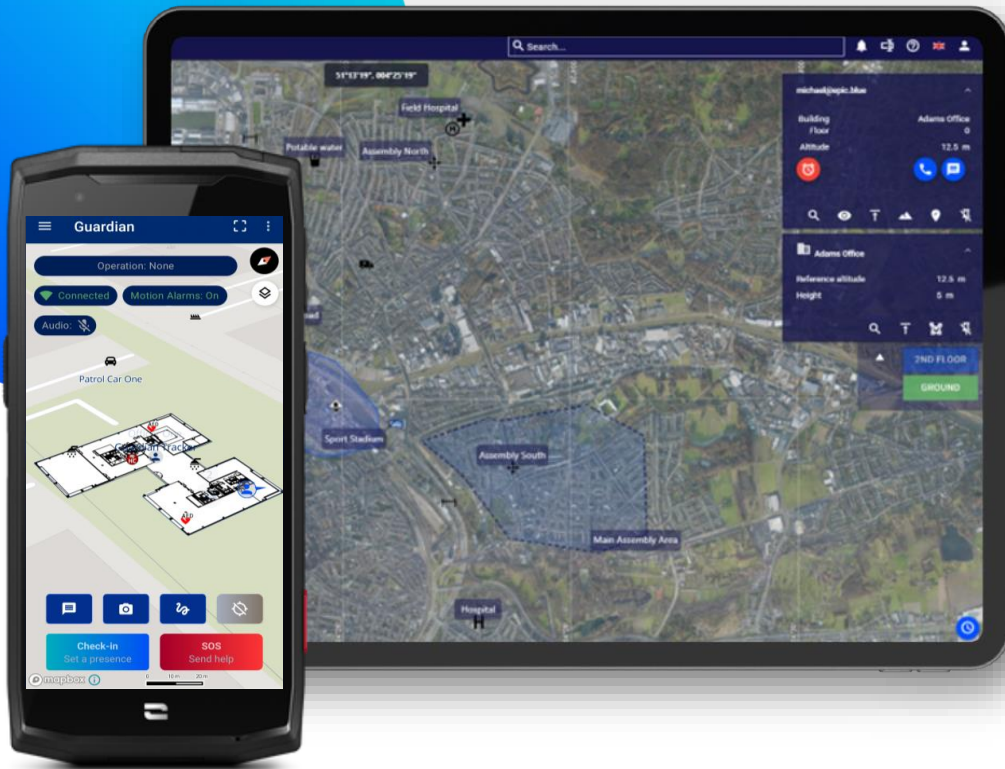
Running on mainstream smartphones, Hyper Location can be easily integrated into the standard equipment used by defense personnel, making it accessible and cost-effective.



The Hyper Location technology is immediately accessible through



Comprehensive situational awareness solution, addressing unique operational hazards with cutting-edge positioning technology



**Assured positioning**, also indoors & GNSS augmentation

**Smart Alert system** for any type of risk

- Manual: Panic button,
- Automated: Fall detection, Man-down, Danger Zone alerts
- Location-based: Geofences, Missed ETA, Toxic Exposure

**Modular capabilities** to increase effectiveness and UX

- Map and Imagery integration, Real-time localisation, Annotation sharing, Tactical Chat, Mission Management,...

**SAAS or On-site deployment**

- Scalable footprint from laptop to cloud

Increase situational awareness and positioning certainty in harsh environments. Deploy Guardian today :



SDK

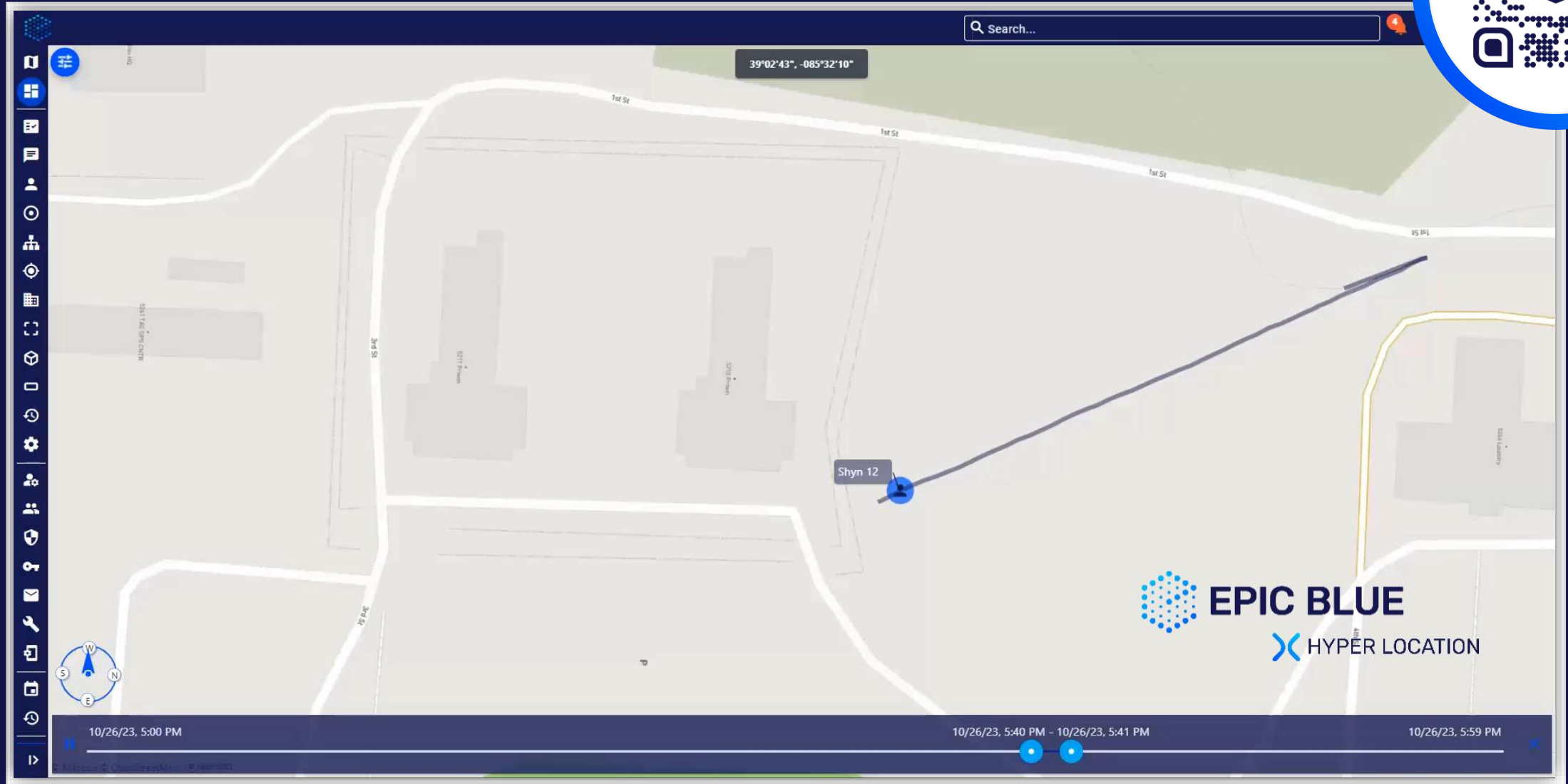


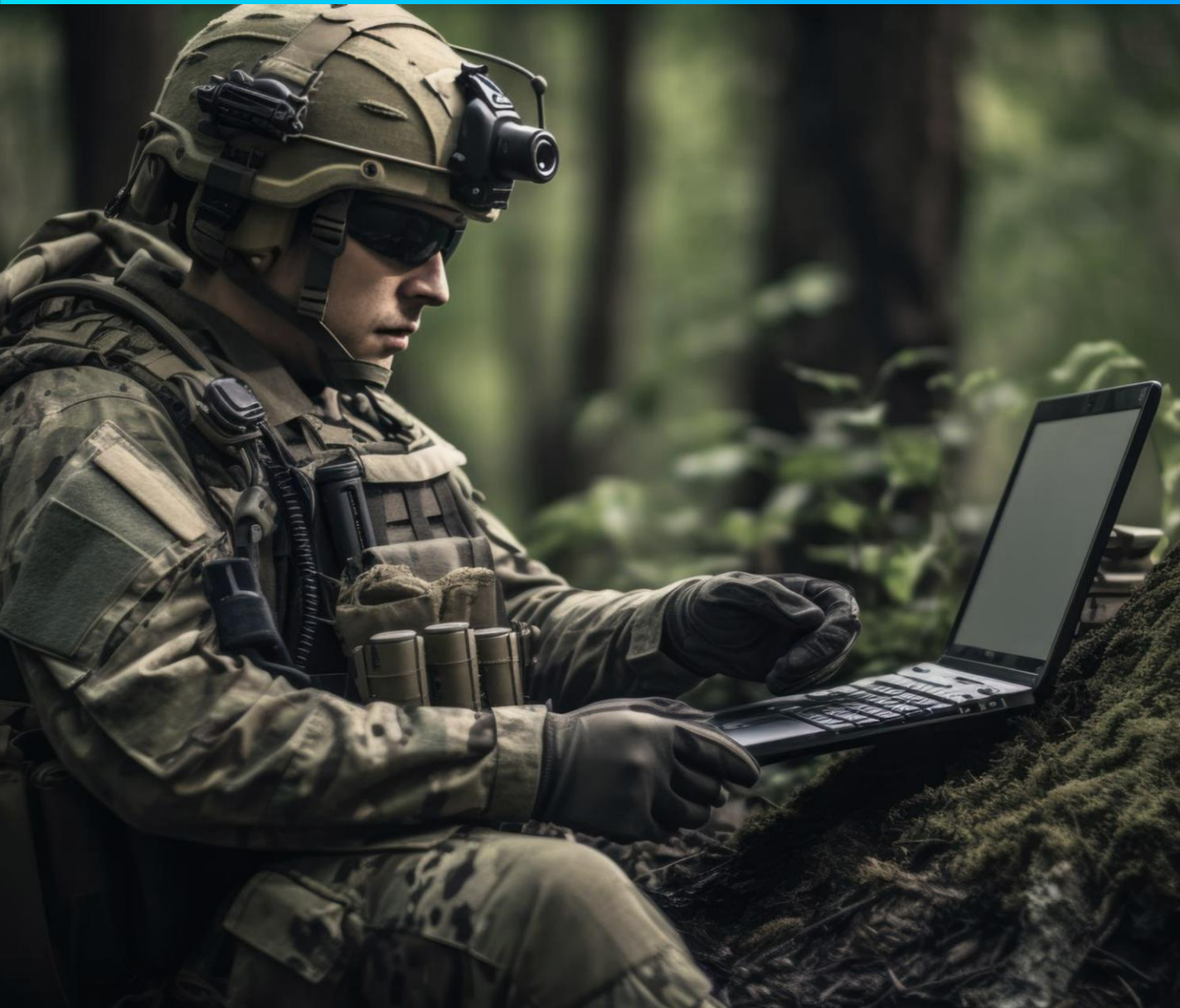
APP



PLUGIN

Discover Hyper Location's impact on operations... View the tracking demo results here





## **Next step**

Get in contact for a demo of the Guardian solution in one of the following use cases

- **Tactical Breach & Incursion**
- **Search & Rescue**
- **GPS-denied Navigation**
- **ISR Coordination**
- **Urban Operations**
- **Training & Simulation**
- **Blue Force Tracking**
- **Tunnels & Underground Recon**



**EPIC BLUE**

*Michael Ilsbroux*  
CEO

*Frederik Malesevic*  
Business Development



[info@epic.blue](mailto:info@epic.blue)

+32 496 77 62 01